

# Insuline werkingsprofielen

## Basale insuline



Toujeo® SoloStar®



Toujeo® DoubleStar®



Lantus® SoloStar®

## Kortwerkende insuline



Apidra® SoloStar®



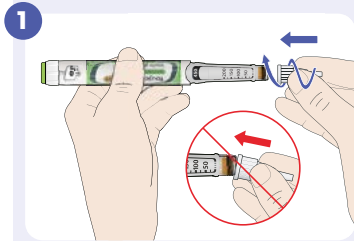
Insuline aspart Sanofi® SoloStar®



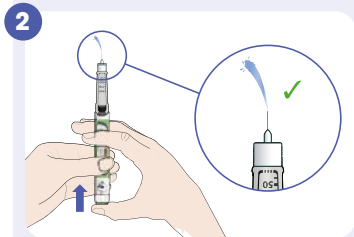
Insuline lispro Sanofi® SoloStar®

## Toujeo® SoloStar®

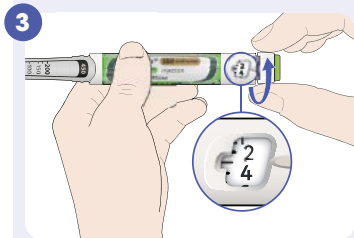
WWW.TOUJEO.NL



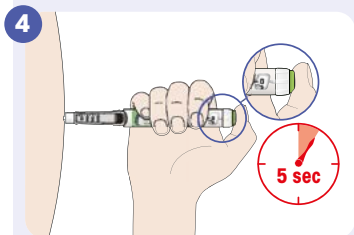
Bevestigen van de naald



Veiligheidstest met 3 eenheden



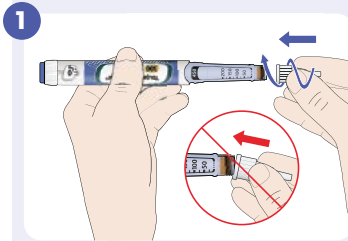
Instellen van de insulinedosis



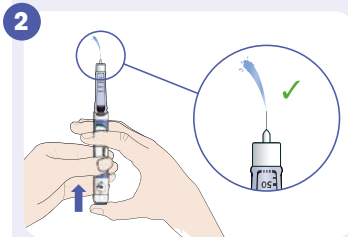
Injecteren van de insulinedosis  
5 sec. wachten na inspuiting

## SoloStar®

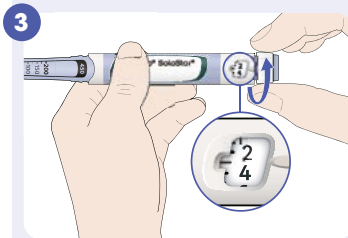
WWW.APIDRA.NL  
WWW.LANTUS.NL  
WWW.INSULINE-ASPART-SANOFLI.NL  
WWW.INSULINE-LISPRO-SANOFLI.NL



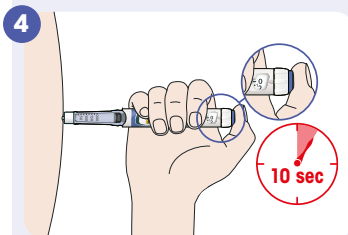
Bevestigen van de naald



Veiligheidstest met 2 eenheden



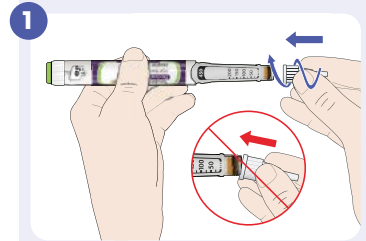
Instellen van de insulinedosis



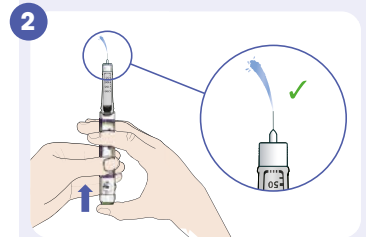
Injecteren van de insulinedosis  
10 sec. wachten na inspuiting

## Toujeo® Doublestar®

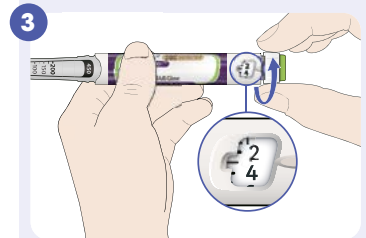
WWW.TOUJEO.NL



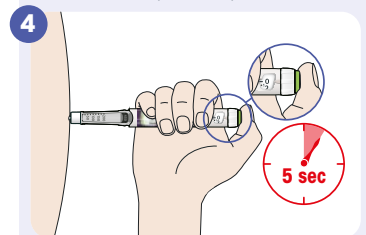
Bevestigen van de naald



Veiligheidstest met 4 eenheden



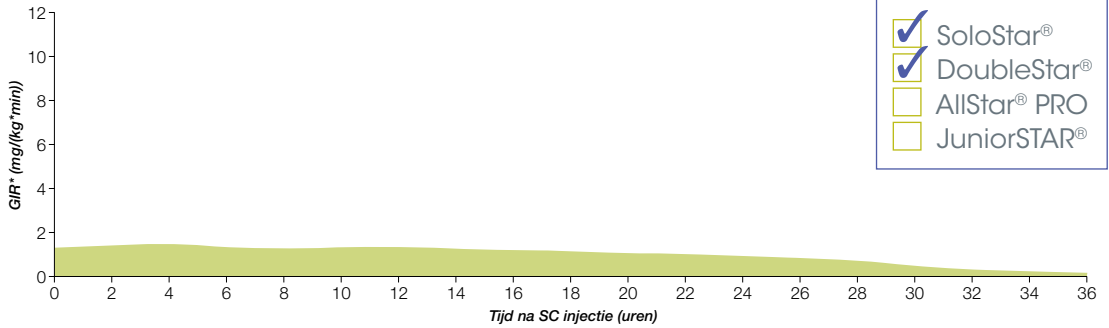
Instellen van de insulinedosis  
(per 2 E)



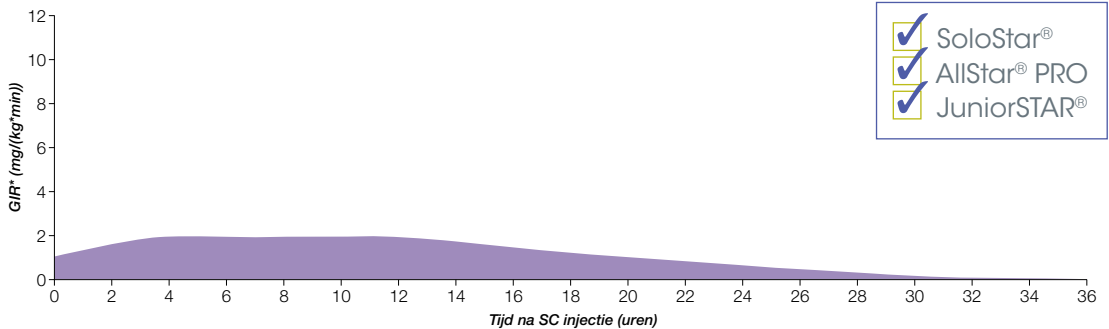
Injecteren van de insulinedosis  
5 sec. wachten na inspuiting

# Basale insuline

## Toujeo®<sup>1</sup>



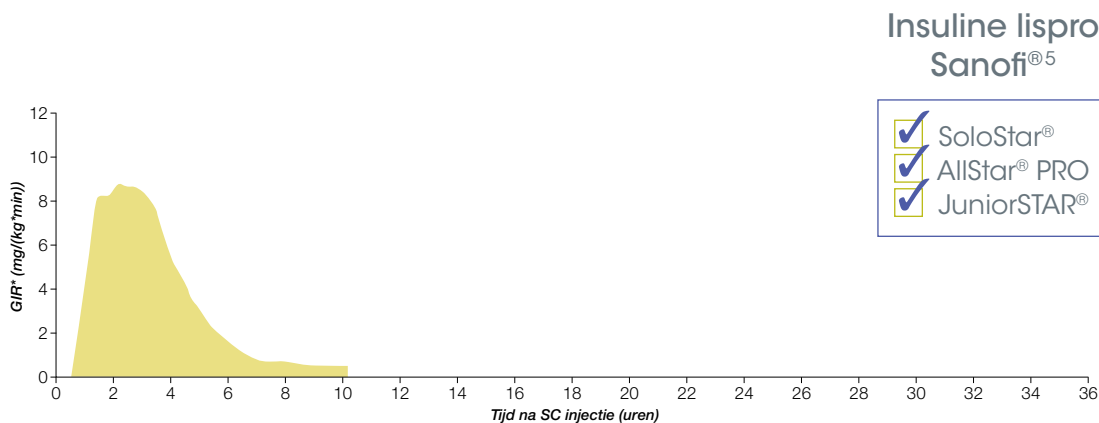
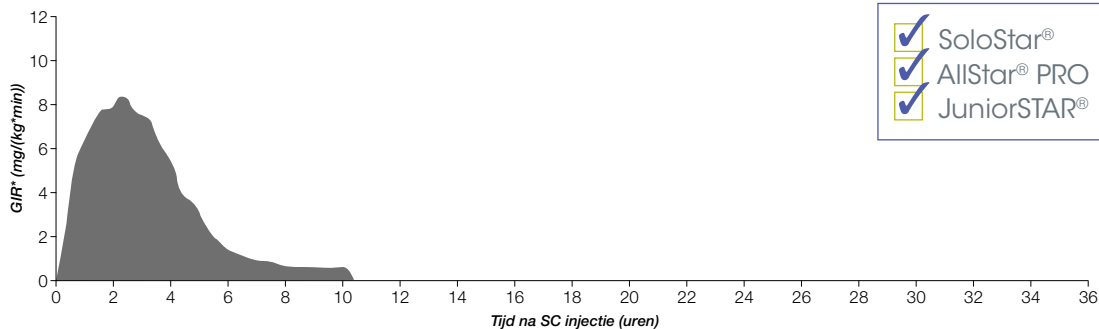
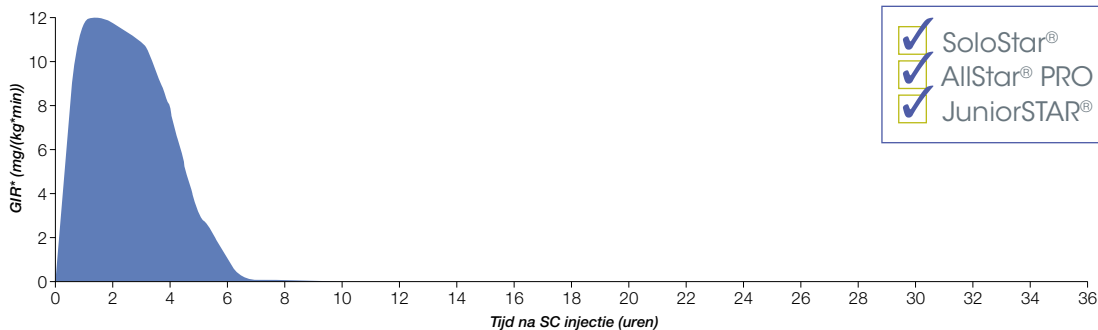
## Lantus®<sup>2</sup>



### Referenties:

1. Samenvatting van de Productkenmerken Toujeo juli 2020. [www.cbg-meb.nl](http://www.cbg-meb.nl)
2. Samenvatting van de Productkenmerken Lantus, oktober 2020. [www.cbg-meb.nl](http://www.cbg-meb.nl)
3. Samenvatting van de Productkenmerken Apidra, juli 2020. [www.cbg-meb.nl](http://www.cbg-meb.nl)
4. Insuline aspart Sanofi  
Kapitza C, Nosek L, Schmider W, Teichert L, Nowotny I. Single-Dose Euglycemic Clamp Study Demonstrating Pharmacokinetic and Pharmacodynamic Similarity Between SAR341402 Insulin Aspart and US- and EU-Approved Versions of Insulin Aspart in Subjects with Type 1 Diabetes. *Diabetes Technol Ther.* 2020 Apr;22(4):278-284.
5. Insuline lispro Sanofi  
Kapitza C, Nowotny I, Lehmann A, Bergmann K, Rotthaeuser B, Nosek L, Becker RHA. Similar pharmacokinetics and pharmacodynamics of rapid-acting insulin lispro products SAR342434 and US- and EU-approved Humalog in subjects with type 1 diabetes. *Diabetes Obes Metab.* 2017 Mei;19(5):622-627.

# Kortwerkende insuline



\*GIR (Glucose Infusion Rate): bepaald als de hoeveelheid geïnfundeerde glucose om constante plasmaglucosespiegels te handhaven (gemiddelde waarden per uur)



